

Name: _____

ANIMAL ADAPTATIONS IN WINTER

Read the descriptions of the animals. Decide how they adapt to the winter cold. Check the correct box. Some Animals can be in more than one box.

ANIMAL	ADAPT and STAY ACTIVE					MIGRATE	HIBERNATE
	Gather and store food for winter	Search for food all winter	Grow thicker fur in winter	Stores fat for winter	Fur turns white		
Earthworm							
Queen Bumblebee							
Arctic Fox							
Squirrel							
Deer							
Garter Snake							
Beaver							
Mouse							
Polar Bear							
Monarch Butterfly							
Brown Bat							
Woodchuck							
Snowshoe Hare							
Humpback Whale							
Canadian Goose							

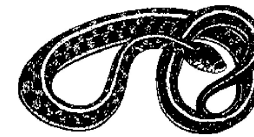
I am a woodchuck. I eat a lot of food in the fall, and then burrow into the ground. While I sleep through winter, my heart rate and breathing slow down.



I am a brown bat. I sleep in a cave or mine, my heart rate and breathing slow down. I do not need food for winter; I survive on food stored in my body.



I am a garter snake. I live off the food supplies stored in my body while I sleep all winter in holes or burrows in the ground.



I am an arctic fox. In the winter my fur turns white so I can hide when I hunt small mice under the snow. I also follow polar bears and eat their leftovers!

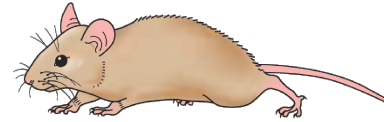


I am a queen bumblebee. In the winter the worker bees die, but I find a hole to sleep in for 6 months. Then I make a nest and all new worker bees!



I am a mouse. I gather extra food in the fall and store it to eat later. I am active in winter. I tunnel under snow

and eat any seeds, roots, and stems that I find.



I am a squirrel. I gather extra food in the fall and store it to eat later. I am active in the winter, but I spend a lot of time in my den to keep warm. I also grow thick fur to keep me warm.



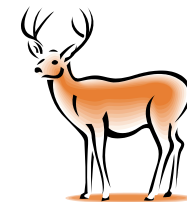
I am a beaver. I eat the inner bark of trees in winter. I gather extra twigs as food in the fall and store them to eat later. I stay in my lodge in the winter with my family.



I am a polar bear. In the winter I store fat as blubber to keep my body warm. I also have very thick fur. I am active all winter hunting seals for food.



I am a deer, I spend winter looking for moss, twigs, bark and leaves to eat. I store body fat and grow thicker fur in the winter.



I am a snowshoe hare. I am active all winter, so my fur changes color to white so I blend in with the snow. I eat bark and buds in the winter.



I am a Canadian Goose. I travel to other places where the weather is warmer in the winter so I can find food. I travel in groups and fly in a V shape for safety.



I am a Monarch butterfly. I spend the summer in Canada and the Northern U.S. I then as far south as Mexico for the winter.



I am an earthworm. In the winter I travel long distances deep into the soil where it is warmer.



I am a humpback whale. In the winter I travel 6,000 miles. I feed in the Arctic waters and need to give birth to my young in tropical warmer waters.

